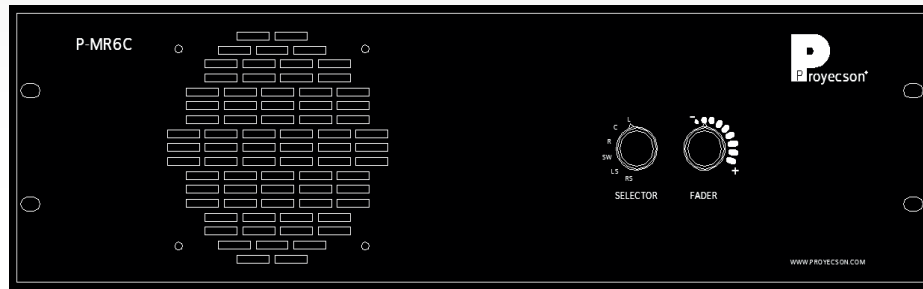


P-MR6C

Cinema Audio Monitor 6 Channels



LOW COST ACTIVE CINEMA 6 CHANNEL BOOTH MONITOR

Cinema booth monitor with a 5" 30W active loudspeaker mounted on a 3 rack units chassis.

Provides two control knobs in the front panel to select channel and volume. Six channels can be monitored, labeled: L-C-R-SL-SR-SW. It employs an induction system to take the signal from the loudspeaker cables without interrupting them. Very easy to install.

The P-MR6C is installed in the cinema audio rack, after the power amplifiers, making the speaker cables coil around the inducer coils provided with the P-MR6C. The inducer coils are installed at the end of a 85 cm cable and built in a suction pad to help their stable location anywhere in the rack.

The P-MR6 features two handles attached to the front panel to help the installation in the rack, as well as 60 cm long power cable with bare cables.

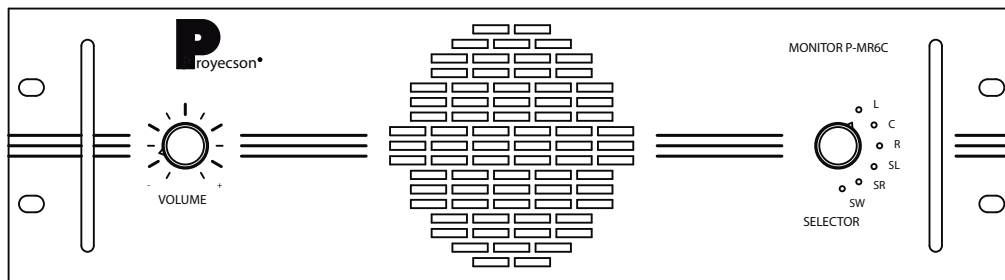
TECHNICAL CHARACTERISTICS

- 6 channel monitor
- 30W 5" active loudspeaker
- Input Signal induced from the speaker cable.
- Simple installation and easy operation
- Two control knobs for volume and channel selection.
- 3 rack-unit chassis
- Size: 480 x 135 x 150 mm (WxHxD)
- Weight: 2.5 Kg
- Power Supply: 220 Vac, 0.6A
- None power connector
- Power cable length 600 mm
- Inducer coils cable: 850 mm

P-MR6C

Cinema Audio Monitor 6 Channels

Bare Power Cables 220 Vac



Inducers with sucking pad

