

NECESSARY ELEMENTS TO MAKE IT WORK

P-SBS Screen: Touch Screen and Controller



This is the control point in the multiplex. You only need one, located in the central rack or inside an standalone box at the office.

P-SBS Power Module and contactors



Group of electrical contactors. You need one of these groups per screen.

1. Choose the devices you want to remotely and independently switch in each booth: projector, server, sound rack, booth HVAC ...
2. Figure out the power contactor needs for each device: There are 3 different power contactors available 16A, 25A and 40A
3. Check if there is space in the electrical panel of each booth to place them.
4. Select the location of the contactors in each room: Electrical panel, pedestal or sound rack
5. Order a P-SBS Power Module to place the contactors in pedestal or sound rack

PAA20+ Automation Adapter



This is the device that will allow you to remote the contactors and also control lights, maskings, security systems ... You just need one per screen

SMART SOLUTIONS

FOR CINEMA EXHIBITORS



PROJECTION SYSTEMS



AUDIO SYSTEMS



CINEMA OUTFITTING



ACCESSORIES & SCREENS



SOFTWARE



CUSTOMER SERVICE



CONSULTING

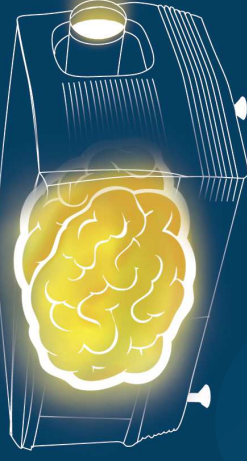


FINANCING



CONTENT MANAGEMENT

PREMIUM CONCEPTS



SMART?

Is your cinema booth

Find out how to do it with

SMART BOOTH SOLUTION P-SBS

Contact your
Cinemanext local office

www.cinemanext.com

SO EASY TO ACHIEVE A SMART CINEMA BOOTH

● 5 Steps x screen without P-SBS

● 1 Single step x multiplex with P-SBS

Possible locations:

- ★ 1 PAA20+ Automation Adaptor
- ★ 2 Touch screen
- ★ 3 Contactors

Repeat the same steps in the other rooms

WITHOUT P-SBS
Operator must go through all projection booths to power on devices from electrical board

Power on server when projector is on

Power on HAVC

Power on projector and wait

Power on lights in theatre

Power on sound rack

WITH P-SBS
Just click power on button on P-SBS. That's all!!!

WITH P-SBS

TWO INSTALLATION OPTIONS

P-SBS Touch Screen installed in a RACK

3U rack module

Time
1 second

Consumption:
Expensive energy peaks depending on operator's workflow

Time:
between 10-20 minutes

Consumption
No energy peaks thanks to delayed and careful power on procedure

And again

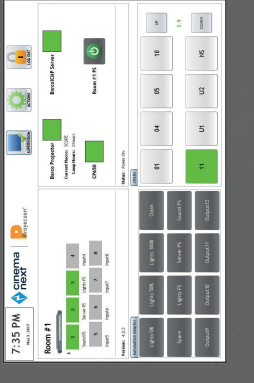
And again

And again

And again

And again

And again



Monitor and remotely control Projector, Server, Sound Devices, HAVC, Lights and more

Check status on-line on the P-SBS touch screen

ONE SINGLE CLICK TO:

You can program the progressive lighting of the rooms

PROGRESSIVE IGNITION TIMING

Air Con (HAVC)
You can even turn the air con on and off

Sound

- Reset the Sound Processor
- Change the preset in Sound Processor
- Turn up and down the volume
- Check if Sound Processor is on-line
- Turn on and off the power supply in sound rack

Projector

- Check if Projector is on-line
- Check current macro
- Check lamps hours
- Power it on/off

Lights

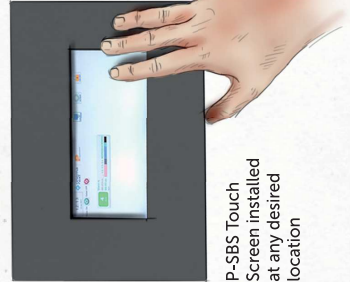
- Call a light scene: movie, intermission, cleaning

Power

- Power on/off any room independently
- Power on/off all rooms in one shot

Server

- Check if it is playing / disconnected / paused
- Check the current movie
- Check duration, remaining time, end time
- Power it on/off



P-SBS Touch Screen installed at any desired location



SMART SOLUTIONS IN ACTION